



**BERD**  
@NFDI

Open Science Day 2025

# The BERD Data Portal - Connected, National, European

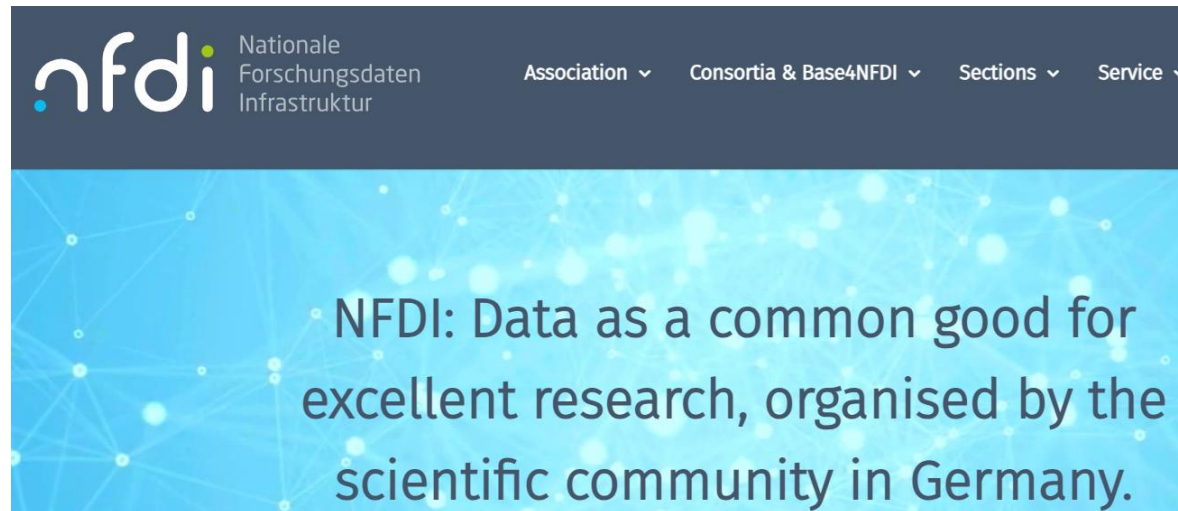
Klaus Tochtermann, [k.tochtermann@zbw.eu](mailto:k.tochtermann@zbw.eu)

ZBW – Leibniz Information Centre for Economics, Kiel & Hamburg

October 2025

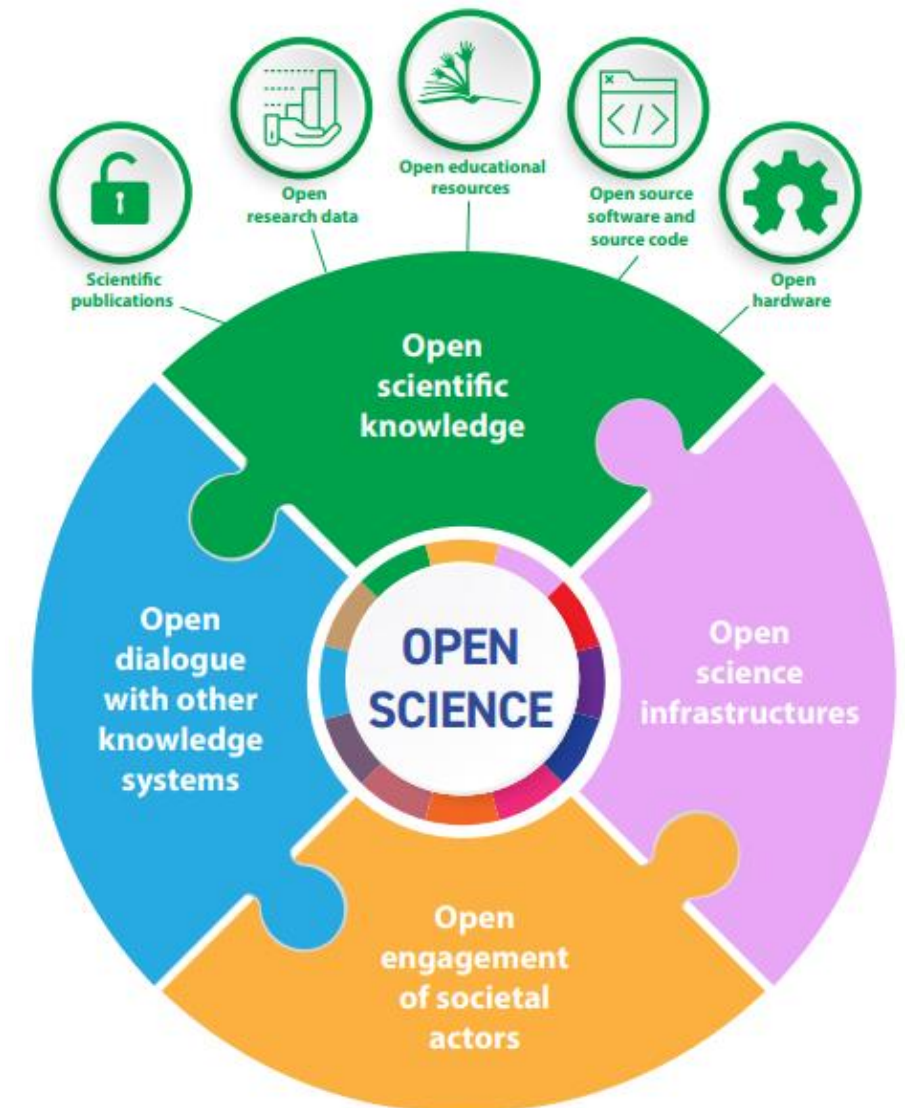


- **NFDI** fosters a sustainable, trustworthy, and interoperable FAIR data ecosystem for research in Germany.



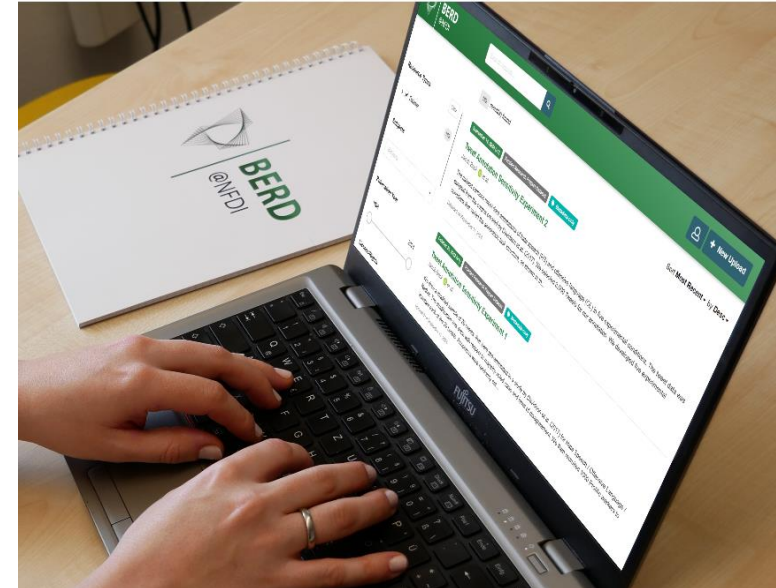
- **BERD@NFDI**
  - contributes to this vision by focusing on **business, economic, and related data**.
  - is a research data infrastructure dedicated to transforming the way business, economic, and related data are managed.

- **Open Research Data**
- **Connected with European Open Science Cloud**
- **NFDI Section Industry Engagement**
- **BERD@Portal**



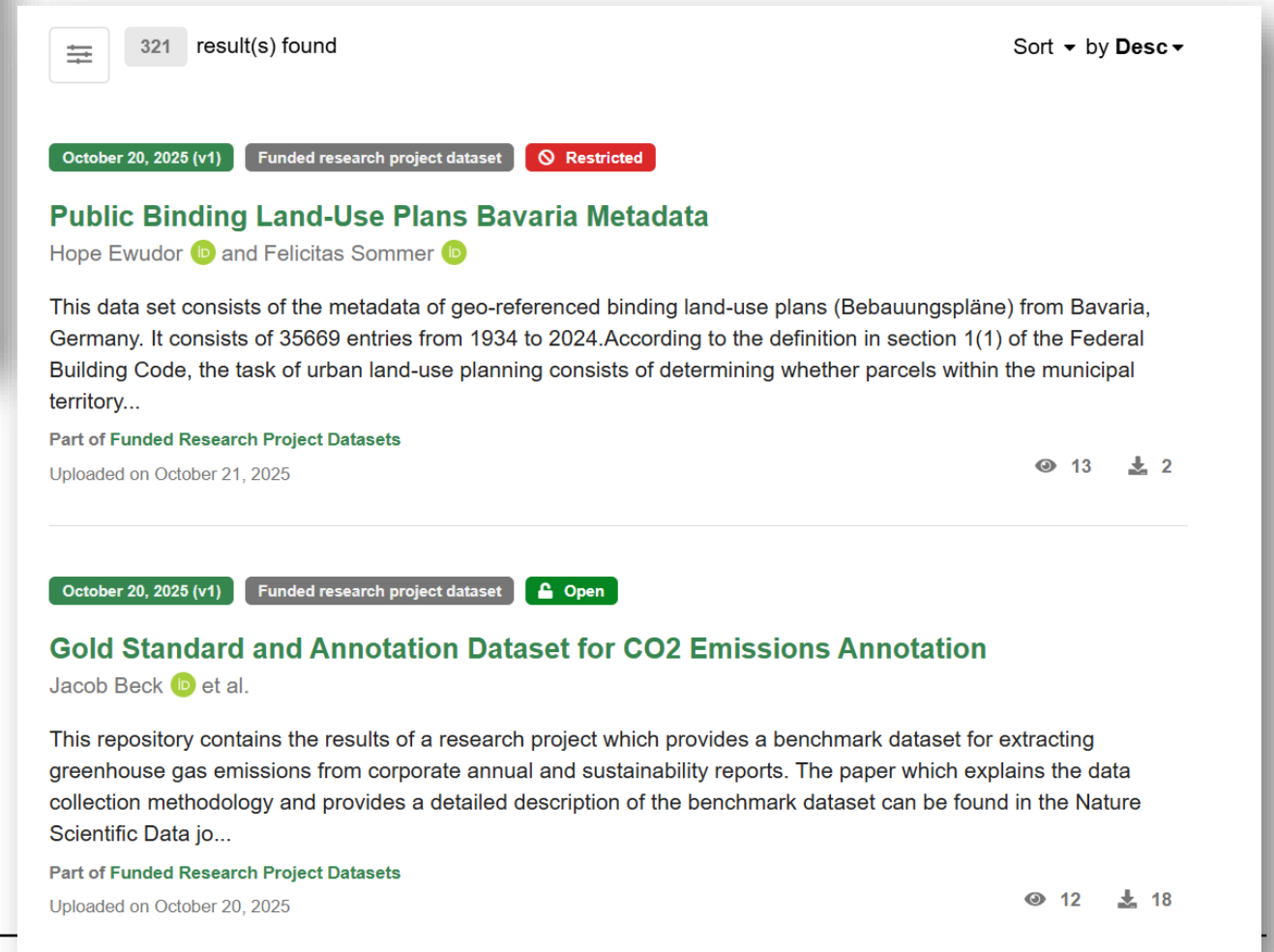
**BERD's Services** are designed to support researchers throughout the entire data lifecycle, from collection and processing to analysis and preservation

- **BERD Academy:** Educate data stewards
- **Open & Big Data:** Access curated, high-quality datasets.
- **Research Data Marketplace:** Secure access to organizational data
- **Generative AI & Analytics Portals:** Tools and AI-driven analysis for text and image data.
- **Legal & OCR Support:** Guidance on privacy, copyright, and document digitization.
- **Company Data & Knowledge Graphs:** Unified access to long-term company data and terminologies.
- **DFG Data Guidelines:** Compliance support for data management standards.
- **BERD Data Portal:** Upload and share research data.







<https://berd-platform.de/>



321 result(s) found Sort ▾ by Desc ▾

October 20, 2025 (v1) Funded research project dataset Restricted

### Public Binding Land-Use Plans Bavaria Metadata

Hope Ewudor  and Felicitas Sommer 

This data set consists of the metadata of geo-referenced binding land-use plans (Bebauungspläne) from Bavaria, Germany. It consists of 35669 entries from 1934 to 2024. According to the definition in section 1(1) of the Federal Building Code, the task of urban land-use planning consists of determining whether parcels within the municipal territory...


Part of [Funded Research Project Datasets](#)

Uploaded on October 21, 2025 👁 13 📄 2

---

October 20, 2025 (v1) Funded research project dataset Open

### Gold Standard and Annotation Dataset for CO2 Emissions Annotation

Jacob Beck  et al.

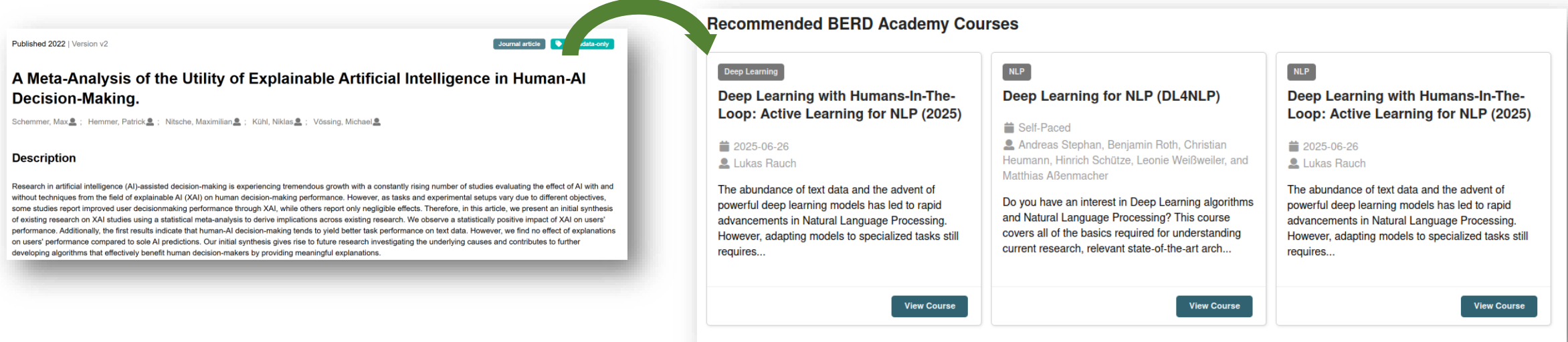
This repository contains the results of a research project which provides a benchmark dataset for extracting greenhouse gas emissions from corporate annual and sustainability reports. The paper which explains the data collection methodology and provides a detailed description of the benchmark dataset can be found in the Nature Scientific Data jo...

Part of [Funded Research Project Datasets](#)

Uploaded on October 20, 2025 👁 12 📄 18

BERD Portal (team) is linked to

- other BERD Services, e.g. BERD Academy, Longterm Company Data

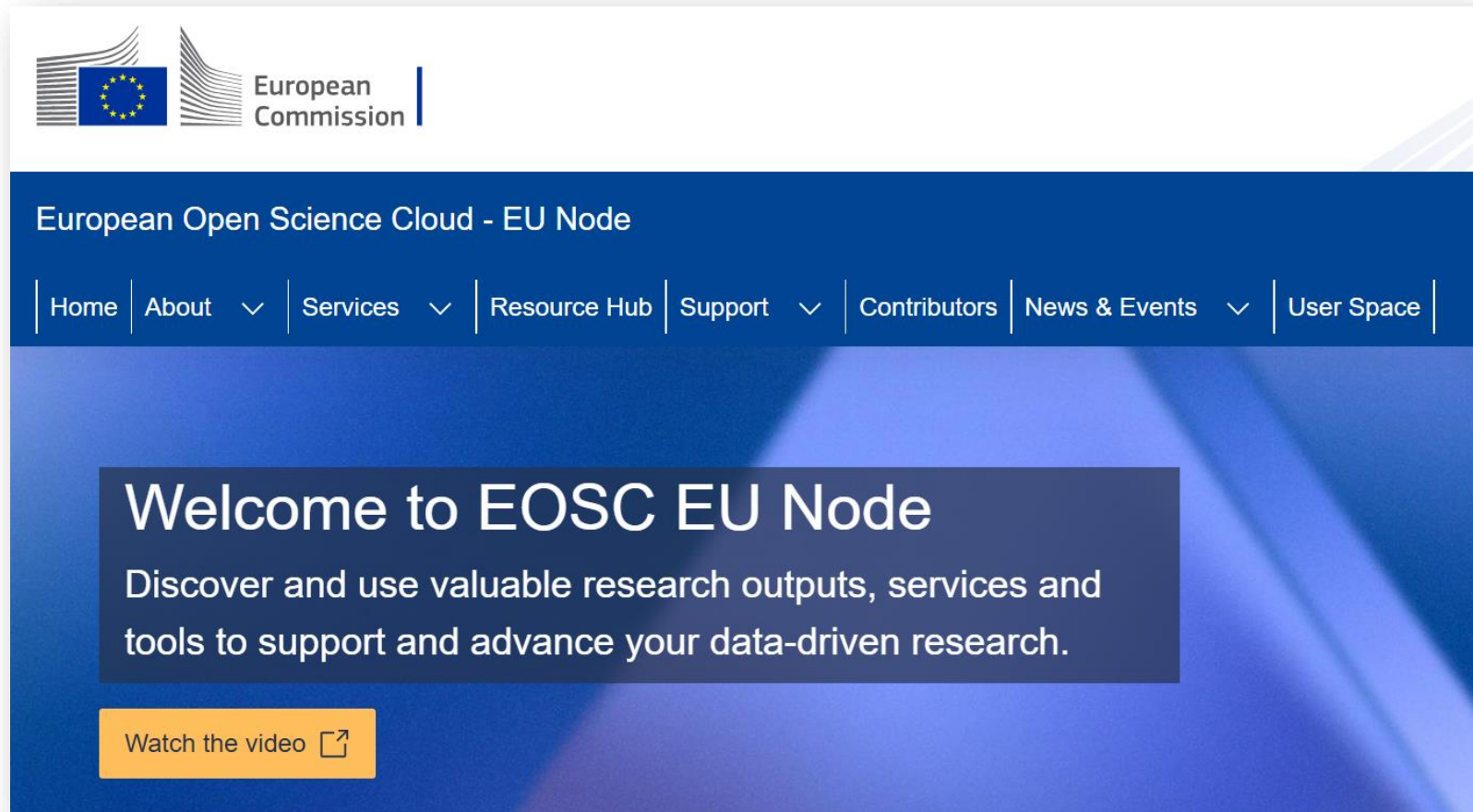


The screenshot displays a journal article on the left and a section of recommended courses on the right. A green arrow points from the article to the courses. The article is titled "A Meta-Analysis of the Utility of Explainable Artificial Intelligence in Human-AI Decision-Making" and is published in 2022. The courses listed are "Deep Learning with Humans-In-The-Loop: Active Learning for NLP (2025)", "Deep Learning for NLP (DL4NLP)", and another "Deep Learning with Humans-In-The-Loop: Active Learning for NLP (2025)". Each course card includes a "View Course" button.

- **NFDI Consortia**, e.g. Base4NFDI, NFDI4Society, NFDI4DataScience, Text+,...
- **NFDI Sections**, e.g. common infrastructures, metadata & terminologies
- **NFDI committees**, e.g. NFDI Senate, NFDI-EOSC working group

to ensure **high degree of consistency with NFDI developments towards „oneNFDI“**

<https://open-science-cloud.ec.europa.eu/>



The screenshot shows the top section of the European Open Science Cloud - EU Node website. At the top left is the European Commission logo, featuring the European Union flag and the text "European Commission". Below this is a dark blue navigation bar with the text "European Open Science Cloud - EU Node" and a menu with items: Home, About (with a dropdown arrow), Services (with a dropdown arrow), Resource Hub, Support (with a dropdown arrow), Contributors, News & Events (with a dropdown arrow), and User Space. The main content area has a blue background with a white text box containing the heading "Welcome to EOSC EU Node" and the subtext "Discover and use valuable research outputs, services and tools to support and advance your data-driven research." Below this text box is an orange button with the text "Watch the video" and an external link icon.

## Resource hub

All resources



Search resources

All resources

Publications

Data

Software

Other Products

Services

Data Sources

Training

Access right



Showing 1 to 20 of 161,420,384 resources

Closed (36,535,371)

Embargo (133,582)

Open access (54,032,599)

Restricted (1,597,378)

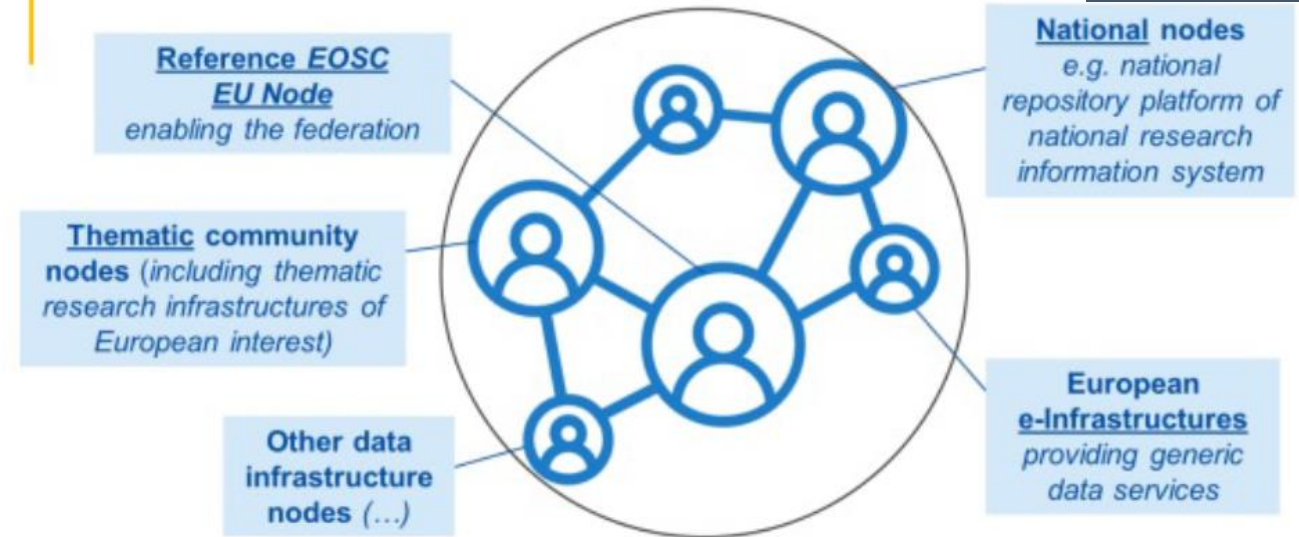
No filters applied

Relev

## The **German Science Council** recommends

- integrating NFDI **more closely into the European** research landscape.
- active **participation in the development of the EOSC** and be integrated as the German node in EOSC.
- positioning NFDI as an **integral part of the EOSC**.

Peter Szegegi (DG-CNECT)



- **Contributions**

- Make BERD datasets available in the **EOSC Resource Hub**
- Connecting BERD datasets to resources in **Zenodo**
- Integration with **Galaxy Europe** for data analysis
- *Build up BERD's federating capabilities allowing Single-Sign On with home institution accounts*

The logo for EOSC EU Node, consisting of a blue rectangular background with the text "EOSC EU Node" in white, and "Advancing Open Science" in a smaller white font below it.The Zenodo logo, featuring the word "zenodo" in a white, lowercase, sans-serif font on a blue rectangular background.The Galaxy Europe logo, featuring a blue square icon with a white horizontal bar, followed by the word "Galaxy" in a bold blue font and "EUROPE" in a smaller blue font below it.

## Interoperability Assessment

Assessment of metadata interoperability between BERD and OpenAIRE schemas.

## Data Harvesting

Datasets from the BERD Data Portal are made available for harvesting by OpenAIRE.

## Knowledge Graph Integration

OpenAIRE integrates BERD resources into their [Knowledge Graph](#).

## Access via EOSC Resource Hub

Resources from the BERD Data Portal can be found in the [EOSC Resource Hub](#).

## Metadata Enrichment

*Enrichment of local metadata in BERD Data Portal via [OpenAIRE Broker API](#).*

- **Zenodo** is an open-access repository for research data, publications etc.
- Recommend Zenodo resources as related to BERD resources
- Development of recommender component based on matching subject keywords

## Related Resources (external) ▼

Found **41** results with matching **Sustainable mobility** subjects based on [STW](#) to [EuroSciVoc](#) mappings in Zenodo.

September 26, 2025 **Preprint** External

### **Eco-Conscious Customers Behavior in Capacitated Two-Echelon Location-Routing Models for Sustainable Last-Mile Delivery.**

10.5281/zenodo.17209985

This paper introduces a novel capacitated Two-Echelon Location-Routing Problem with Eco-conscious Customer Behavior (2E-LRP-ECB) aimed at enhancing the environmental sustainability of last-mile delivery (LMD) operations. The model jointly optimize...

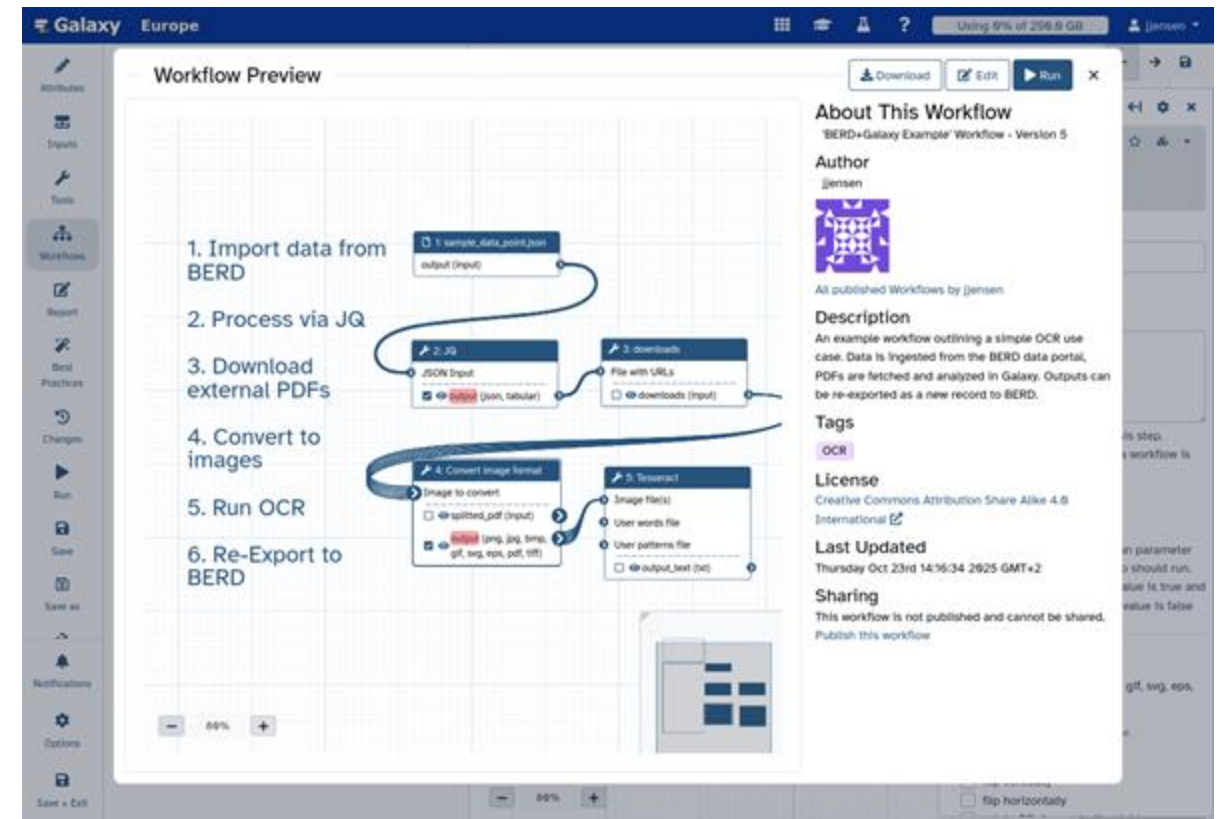
September 24, 2025 **Working paper** External

### **More of the same or a significant step forward in data-based cycling research and promotion?!**

10.5281/zenodo.17193640

This document summarizes a workshop held during the Cycling Research Board Annual Meeting 2025 in Amsterdam. Led by researchers from the University of Salzburg and Technical University of Dresden, the workshop explored the epistemological, methodol...

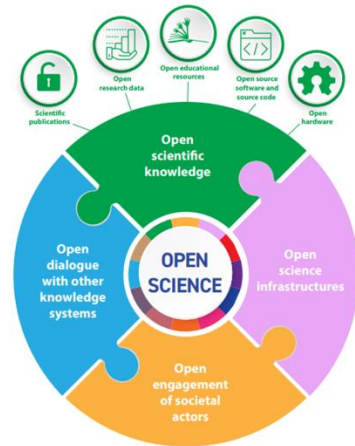
- **Galaxy Europe** is a cloud-based compute environment, that allows the creation of reusable workflows for data processing and analysis.
- Galaxy can access datasets from the BERD Data Portal
- Analyze “unstructured” data in Galaxy and design workflows (e.g. pattern matching, geocoding)
- Processed outputs are exported back to BERD Data Portal, including provenance information.



# Summary

## BERD and Open Science

- **Open Research Data**
- **Connected with European Open Science Cloud**
- **Section Industry Engagement**
- **BERD@Portal**

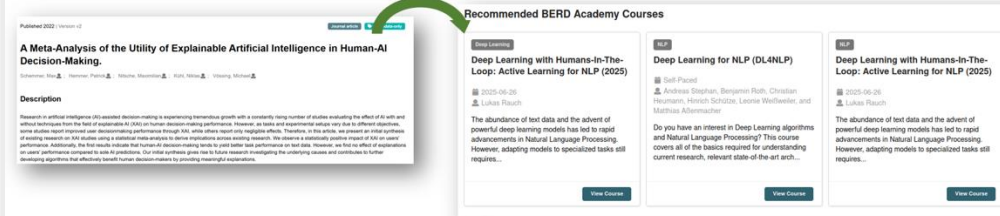


Source: UNESCO Recommendation on Open Science (2021), p. 11

## BERD Portal is well connected in Germany

BERD Portal (team) is linked to

- other BERD Services, e.g. BERD Academy, Longterm Company Data



- **NFDI Consortia**, e.g. Base4NFDI, NFDI4Society, NFDI4DataScience, Text+,...
- **NFDI Sections**, e.g. common infrastructures, metadata & terminologies
- **NFDI committees**, e.g. NFDI Senate, NFDI-EOSC working group

to ensure **high degree of consistency with NFDI developments towards „oneNFDI“**

## BERD Portal is connected across Europe via EOSC

### • Contributions

- Make BERD datasets available in the **EOSC Resource Hub**
- Connecting BERD datasets to resources in **Zenodo**
- Integration with **Galaxy Europe** for data analysis
- *Build up BERD's federating capabilities allowing Single-Sign On with home institution accounts*



Thank you!

Funded by the Deutsche Forschungsgemeinschaft (DFG, German Research Foundation) – 460037581